

Temperature and Humidity Sensor

1 Features

- Ultra-low power consumption
- Wide supply voltage range (1.60V to 5.5V)
- Typical accuracy: $\pm 3\%$ RH and $\pm 0.3^\circ\text{C}$
- Factory calibrated and reflow solderable
- Available in DFN-6 Package

2 Applications

- Washing machines and dryers
- Smart thermostats and room monitor
- White goods
- Humidifiers and dehumidifiers
- Air quality monitoring
- Wireless sensors
- Household appliances

3 Description

The GD30TSHTC3 is a temperature and humidity sensor designed for consumer electronics applications. It fulfills requirements of the consumer electronics field in terms of package size, power consumption, supply voltage range and cost performance. The GD30TSHTC3 implements a complete temperature and humidity

sensor system on a single chip, including capacitive humidity sensing unit, PN junction temperature measurement unit, 16-bit ADC, digital signal processing circuit, calibration data storage unit and I2C digital communication interface circuit.

The GD30TSHTC3 adopts a miniaturized DFN6 package with a size of 2mm × 2mm × 0.75mm, which enables applications in the most limited of spaces. The GD30TSHTC3 covers a humidity measurement range of 0 ~ 100%RH and a temperature measurement range of $-45^\circ\text{C} \sim 135^\circ\text{C}$. The supply voltage range is 1.60 ~ 5.5V and the energy consumption of 2 μJ make the GD30TSHTC3 suitable for mobile or wireless communication devices powered by batteries. Each GD30TSHTC3 is fully calibrated before leaving the factory to ensure the consistency and accuracy of the chip. Tape and reel packaging together with suitability for standard SMD production process requirements.

Device Information¹

PART NUMBER	PACKAGE	BODY SIZE (NOM)
GD30TSHTC3	DFN-6	2.00mm x 2.00mm

1. For packaging details, see [Package Information](#) section.

Simplified Application Schematic

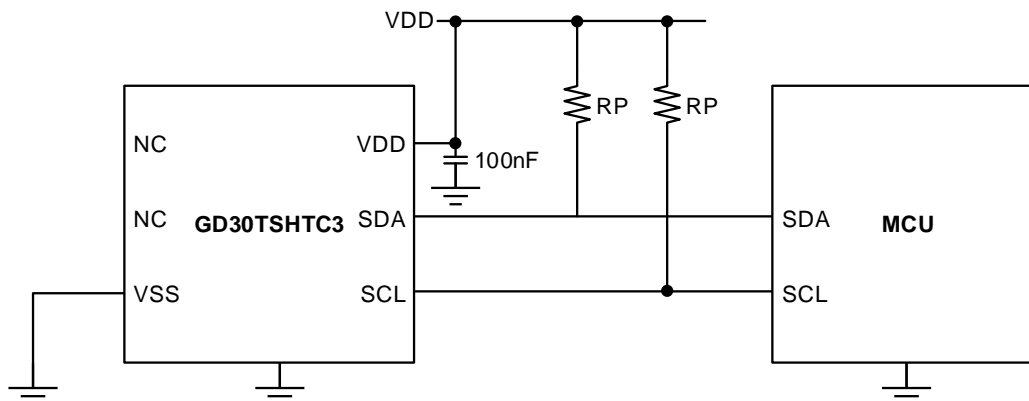
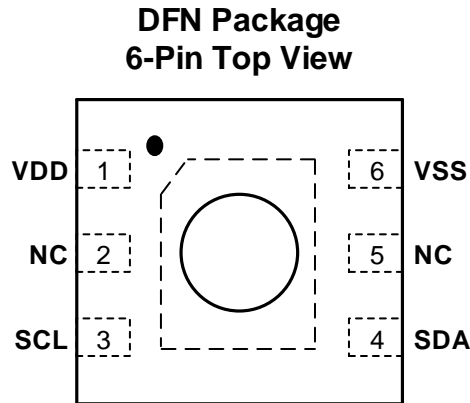


Table of Contents

1	Features	1
2	Applications	1
3	Description	1
	Table of Contents	2
4	Device Overview	3
4.1	Pin Assignment	3
4.2	Pin Description	3
5	Parameter Information	4
5.1	Absolute Minimum and Maximum Ratings	4
5.2	Recommended Operation Conditions	4
5.3	Electrical Sensitivity	4
5.4	Electrical Characteristics	4
5.5	Humidity Sensor Characteristics	5
5.6	Temperature Sensor Characteristics	5
5.7	RH Accuracy at Different Temperatures	6
6	Functional Description	7
6.1	Block Diagram	7
6.2	Operation	7
7	Application Information	12
7.1	Typical Application Circuit	12
8	Package Information	13
8.1	Outline Dimension	13
9	Ordering Information	15
10	Revision History	16

4 Device Overview

4.1 Pin Assignment



4.2 Pin Description

PINS		PIN TYPE ¹	FUNCTION
NAME	NUM		
VDD	1	P	Supply voltage.
NC	2		No connection.
SCL	3	IO	Serial clock; input/output.
SDA	4	O	Data pin; input/output.
NC	5		No connection.
VSS	6	G	Ground.

1. P = power, G = Ground, I = input, O = Output.

5 Parameter Information

5.1 Absolute Minimum and Maximum Ratings

Exceeding the operating temperature range (unless otherwise noted)¹

SYMBOL	PARAMETER	MIN	MAX	UNIT
V _{DD}	Power supply	-0.3	6	V
T _A	Operating temperature range	-45	130	°C
T _{stg}	Storage temperature	-45	130	°C

1. The maximum ratings are the limits to which the device can be subjected without permanently damaging the device. Note that the device is not guaranteed to operate properly at the maximum ratings. Exposure to the absolute maximum rating conditions for extended periods may affect device reliability.

5.2 Recommended Operation Conditions

SYMBOL	PARAMETER	MIN	TYP	MAX	UNIT
V _{DD}	Supply voltage	1.6	3.3	5.5	V
T _A	Operating Temperature range	-45		130	°C

5.3 Electrical Sensitivity

SYMBOL	CONDITIONS	VALUE	UNIT
V _{ESD(HBM)}	Human-body model (HBM), ANSI/ESDA/JEDEC JS-001-2017	±4000	V
V _{ESD(CDM)}	Machine Mode (MM)	±500	V

5.4 Electrical Characteristics

Operating conditions in the table default to 25°C and 3.3V supply voltage.

SYMBOL	PARAMETER	CONDITIONS	MIN	TYP	MAX	UNIT	
Power supply							
V _{DD}	Power Supply Voltage		1.6	3.3	5.5	V	
V _{POR}	Power-up/down level	Static power supply	1.3	1.4	1.5	V	
I _{DD}	Supply current	Idle state		45	80	μA	
		Sleep mode		0.2	0.3		
		Measurement	Normal		500		860
			Low power		320		620
		Average	Normal		3		
Low power			1				
V _{IL}	Low level input voltage			0.4 x V _{DD}	V		
V _{IH}	High level input voltage			0.7 x V _{DD}	V		
V _{OL}	Low level output voltage	3mA sink current			0.2 x V _{DD}	V	
Timing Specification for the Sensor System							
t _{PU}	Power-up time	After hard reset, V _{DD} ≥ V _{POR}		180	500	μs	

SYMBOL	PARAMETER	CONDITIONS		MIN	TYP	MAX	UNIT
t _{SR}	Soft reset time	After soft reset			180	500	μs
t _{MEAS}	Measurement time	Average	Normal		10	11	ms
			Low power		1.5	2	

5.5 Humidity Sensor Characteristics

PARAMETER	CONDITIONS	VALUE	UNIT
Accuracy	Typ	±3	%Relative humidity
	Max	Figure 1	
Resolution		0.01	%Relative humidity
Hysteresis		±1	%Relative humidity
Specified Range		0 to 100	%Relative humidity
Response Time	τ63%	8	Second
Long Term Drift	Typ	<0.5	%Relative humidity /year

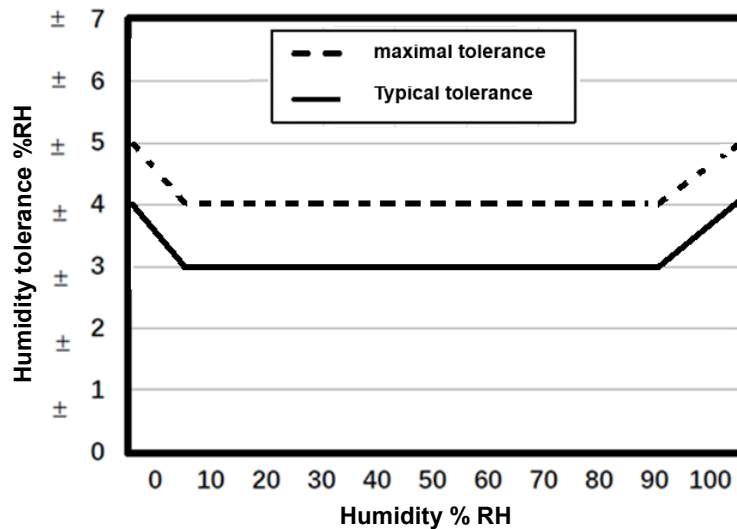


Figure 1. Tolerance of RH @25°C for GD30TSHTC3

5.6 Temperature Sensor Characteristics

PARAMETER	CONDITIONS	VALUE	UNIT
Accuracy	Typ	±0.3	°C
	Max	Figure 2	°C
Resolution		0.01	°C
Hysteresis		±1	°C
Specified Range		-45 to 130	°C
Response Time	τ63%	<5-30	second
Long Term Drift	Typ	<0.02	°C/year

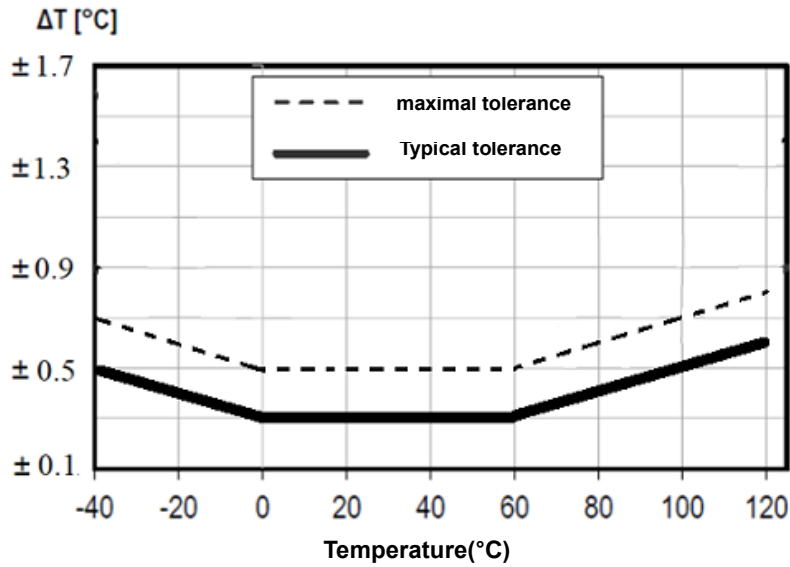


Figure 2. Temperature Accuracy of GD30TSHTC3

5.7 RH Accuracy at Different Temperatures

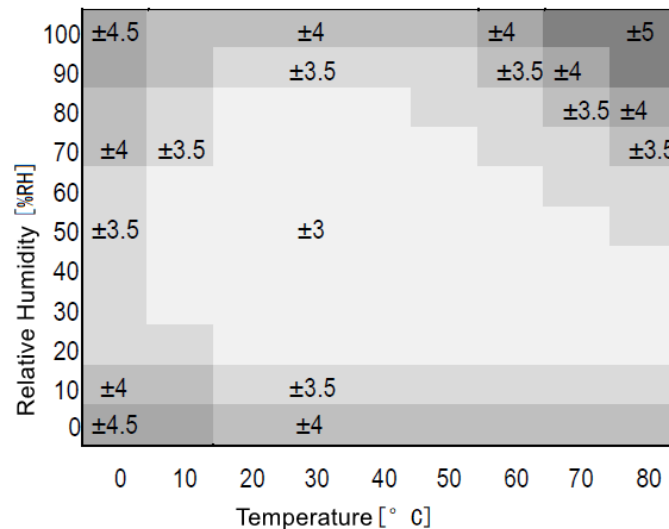


Figure 3. Typical Accuracy of Relative Humidity Measurements for Different Temperature

The sensor shows optimum performance when operating within the recommended normal temperature and humidity ranges (5°C ~ 60°C and 20%RH ~ 80%RH, respectively). Long-term exposure to conditions outside the normal range, especially in high humidity conditions, may cause temporary offset in RH signal (eg, 4%RH error after 60 hours at >80% RH). After returning to normal temperature and humidity ranges, the sensor will slowly revert to its factory calibration state. Long-term exposure to extreme conditions may accelerate aging. To ensure stable operation of the humidity sensor, the conditions described in the document "GD30TSHT-xx Assembly of SMD Packages", section "Storage and Handling Instructions" regarding exposure to volatile organic compounds must be met. Note that this applies not only to transportation and manufacturing, but also to the operation of the GD30TSHTC3.

6 Functional Description

6.1 Block Diagram

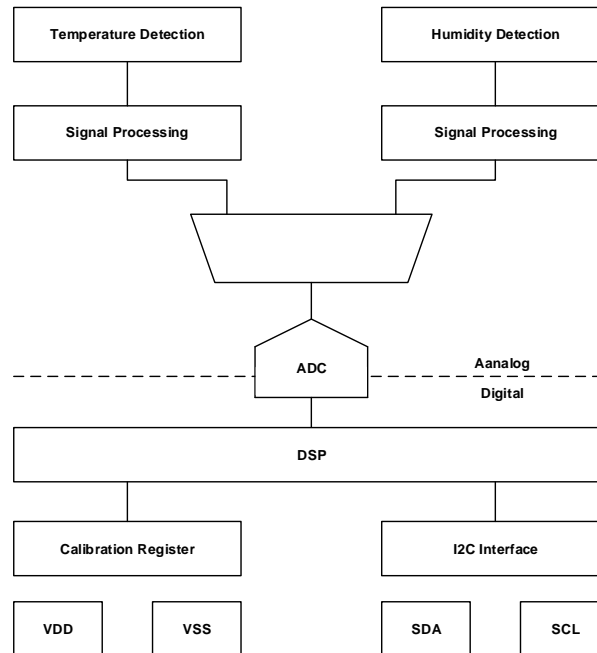


Figure 4. GD30TSHTC3 Block Diagram

6.2 Operation

6.2.1 Overview

All commands and memory locations of the GD30TSHTC3 are mapped to a 16-bit address space which can be accessed via the I²C protocol.

Table 1. I²C device Address

GD30TS002T	I ² C ADDRESS in HEX	BINARY
I ² C Address	0x70	111'0000

1. The I2C device address of the GD30TSHTC3.
2. According to the I²C protocol, each communication starts with a START signal and ends with a STOP signal.

6.2.2 Power-Up, Sleep and Wakeup

When the power supply voltage VDD reaches the power-up voltage level VPOR, the GD30TSHTC3 enters the idle state. Then the sensor should be set to sleep mode to reduce the power consumption.

Table 2. Sleep Command of the Sensor

COMMAND	HEX	BINARY
Sleep	0xB098	1011'0000'1001'1000

When the sensor is in sleep mode, it requires the following wake-up command before other operations, see [Table 3](#).

Table 3. Wake-up Command of the Sensor

COMMAND	HEX	BINARY
Wakeup	0x3517	0011'0101'0001'0111

6.2.3 Measurement Commands

The GD30TSHTC3 provides clock stretching option and the order of temperature and humidity data. These parameters can be implemented with the different commands in Table 4. Each command triggers a temperature and humidity conversion.

Table 4. Temperature and Humidity Measurement Command

	CLOCK STRETCHING OPEN		CLOCK STRETCHING CLOSE	
	TEMP FIRST	RH FIRST	TEMP FIRST	RH FIRST
Normal	0x7CA2	0x5C24	0x7866	0x58E0
Low Power	0x6458	0x44DE	0x609C	0x401A

6.2.4 Measuring and Reading the Signals

Each measurement consists four commands, starting with a STRAT signal and ending with a STOP signal. The specific execution sequence is as follows:

- Wake-up command
- Measurement command
- Read command
- Sleep command

The specific typical command sequence is shown in Figure 5.

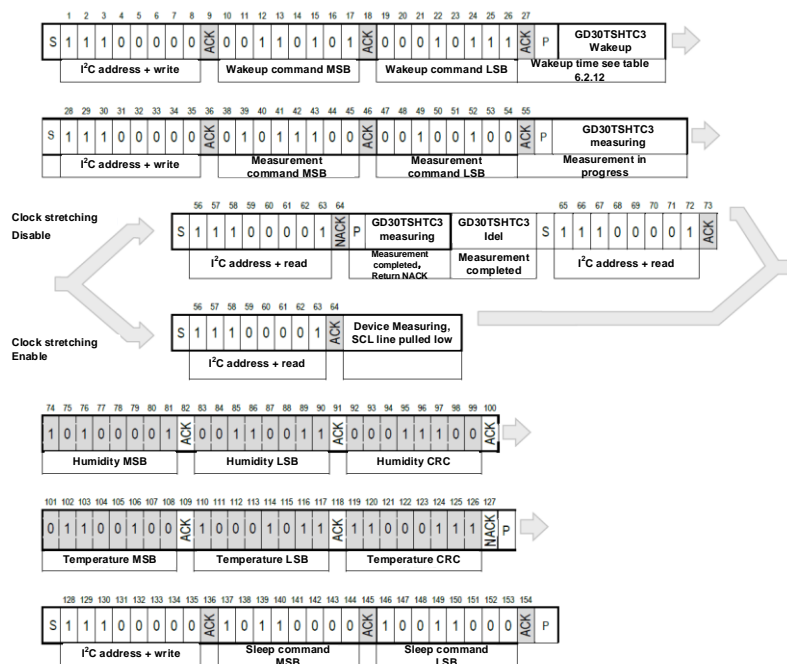


Figure 5. GD30TSHTC3 Block Diagram

This example shows that the humidity data is sent first. The actual humidity data is 63% and the temperature is 23.7°C. The white box is controlled by the microcontroller and the gray box is controlled by the sensor.

6.2.5 Measurement Process

In general, the sensor will not respond to any I2C communication request during the temperature and humidity measurement process. For example, the microcontroller will receive a NACK signal when sending read and write commands. However, when the clock stretching mode is enabled, the sensor responds to the read command of the microcontroller with an ACK signal and pulls down the SCL line until the measurement is complete. At this time, the sensor starts sending the measurement results.

The power consumption during measurement is shown in 5.4. In order to ensure the repeatability of the temperature and humidity measurement, it is recommended to avoid any I2C communication during the measurement.

6.2.6 Readout of Measurement Results

After the microcontroller sends the temperature and humidity measurement command, the sensor starts to perform temperature and humidity conversion. After the conversion is completed, the microcontroller can read the measurement results by sending the START signal and the I2C read header. The sensor will acknowledge the reception of the I2C read header, and send 2 bytes of temperature/humidity data and 1 byte of CRC checksum. Then continue to send two bytes of humidity/temperature data and 1 byte of CRC check data. The microcontroller must generate an ACK response signal for each received byte. If the sensor does not receive the ACK signal sent by the microcontroller, it will not continue to transmit subsequent data.

If the I2C master is not concerned about the subsequent data, it can abort the data transmission with a NACK signal.

If the user needs temperature and humidity data and is unwilling to process CRC data, it is recommended to read the first two bytes of data with the CRC byte after reading the second two data bytes with a NACK to abort data transmission.

6.2.7 Soft Reset

The GD30TSHTC3 provides a soft reset mechanism to force the system into an idle state without power loss. It acts the same as power-on reset.

The send command for soft reset is shown in Table 5:

Table 5. Soft Reset Command of the Sensor

COMMAND	HEX	BINARY
Soft Reset	0x805D	1000'0000'0101'1101

6.2.8 General Call Reset

Sensors can also be reset using General Call in the I2C specification, which acts as an on-power reset. It is important to note that this reset is not for GD30TSHTC3, it resets slave devices on all I2C buses, but it requires that the slave devices be able to respond to this command. The specific reset commands are shown in Table 6:

Table 6. General Call Reset

COMMAND	HEX CODE
Address byte	0x00
Second byte	0x06
Reset command using the general call address	0x0006

6.2.9 Readout of ID Register

The GD30TSHTC3 has an ID register for storing the product code of GD30TSHTC3. The readout of the ID register can be used to verify the communication between the sensor and the microcontroller. The commands for reading the ID register are shown in [Table 7](#):

Table 7. Readout Command of ID Register

COMMAND	HEX	BINARY
Read ID	0xEFC8	1110'1111'1100'1000

1. This command needs to be followed by I2C write header, then the microcontroller can send the I2C read header to read the 16-bit ID and one byte CRC check data.

6.2.10 CRC Checksum

The CRC check algorithm for data transmission is shown in [Table 8](#). The CRC check object is the 2 bytes of data transmitted before it.

Table 8. I²C CRC8 properties

PROPERTY	VALUE
Name	CRC-8
Width	8 bit
Protected data	Read and/or write data
Polynomial	0X31(x8 + x5 + x4 + 1)
Initialization	0xFF
Reflect input	False
Reflect output	False
Examples	CRC(0xBEEF) = 0x92

6.2.11 Conversion of Signal Output

The output temperature and humidity data are 16-bit unsigned data. These data have been linearized and compensated for temperature. Converting these raw values into real temperature and humidity data can be

achieved using the following formulas:

Relative humidity conversion formula (result in %RH):

$$RH = 100 \times \frac{S_{RH}}{2^{16} - 1}$$

Temperature conversion formula (result in °C):

$$T [^{\circ}C] = -45 + 175 \times \frac{S_T}{2^{16} - 1}$$

S_{RH} and S_T represent the raw sensor output for humidity and temperature, respectively. It is important to note that the raw output is converted to decimal in formula calculation.

6.2.12 Communication Timing

SYMBOL	PARAMETER	TEST CONDITION	NORMAL		LOW POWER		UNIT
			MIN	MAX	MIN	MAX	
f _{SCL}	SCL clock frequency		0	100	0	1000	KHz
t _{HD;STA}	Hold time (repeated) START condition	After this period, the first clock pulse is generated	4.0		0.6		μs
t _{LOW}	LOW period of the SCL clock		4.5		0.5		μs
t _{HIGH}	HIGH period of the SCL clock		4.0		0.26		μs
t _{SU;STA}	Set-up time for a repeated START condition		4.7		0.5		μs
t _{HD;DAT}	SDA hold time		0		0		μs
t _{SU;DAT}	SDA set-up time		250		50		ns
t _R	SCL/SDA rise time			1000		120	ns
t _F	SCL/SDA fall time			300		120	ns
t _{VD; DAT}	SDA valid time			3.5		0.5	μs
t _{SU;STO}	Set-up time for STOP condition		4		0.26		μs
C _B	Capacitive load on bus line			500		400	pF

1. Communication timing parameters, the working conditions in the table default to 25°C and a 3.3V operating voltage.

7 Application Information

7.1 Typical Application Circuit

The GD30TSHTC3 supports the normal mode and Fast Mode Plus of the I2C protocol (with a maximum SCL clock frequency of up to 1MHz), and also supports the clock stretching mode. Users can choose the mode according to their actual needs. For detailed information about the I2C protocol, please refer to the NXP I2C bus specification and user manual UM10204, Rev.6, April 4th, 2014.

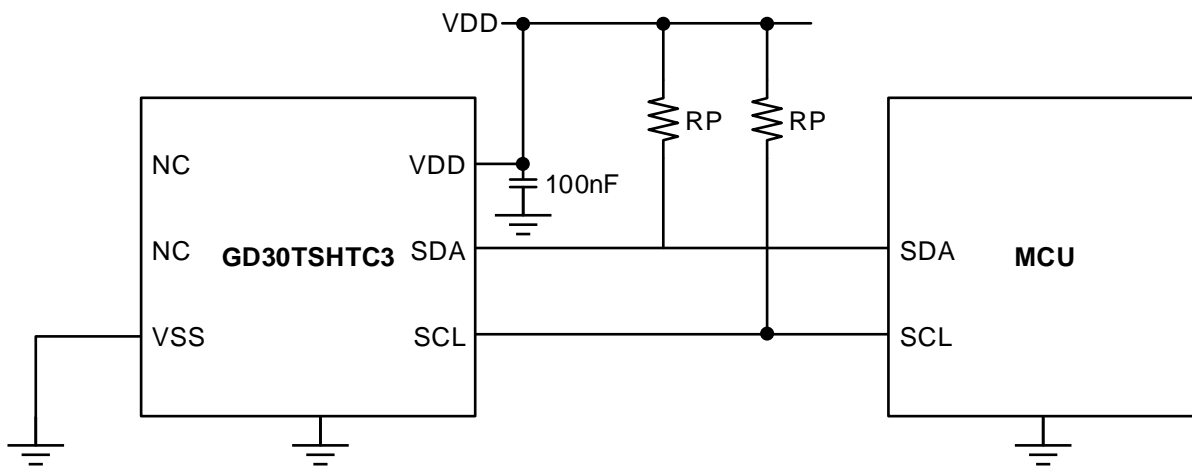


Figure 6. GD30TSHTC3 Reference Circuit

Between VDD and GND, a 100nF decoupling capacitor is required, and the closer this capacitor is to the sensor, the better.

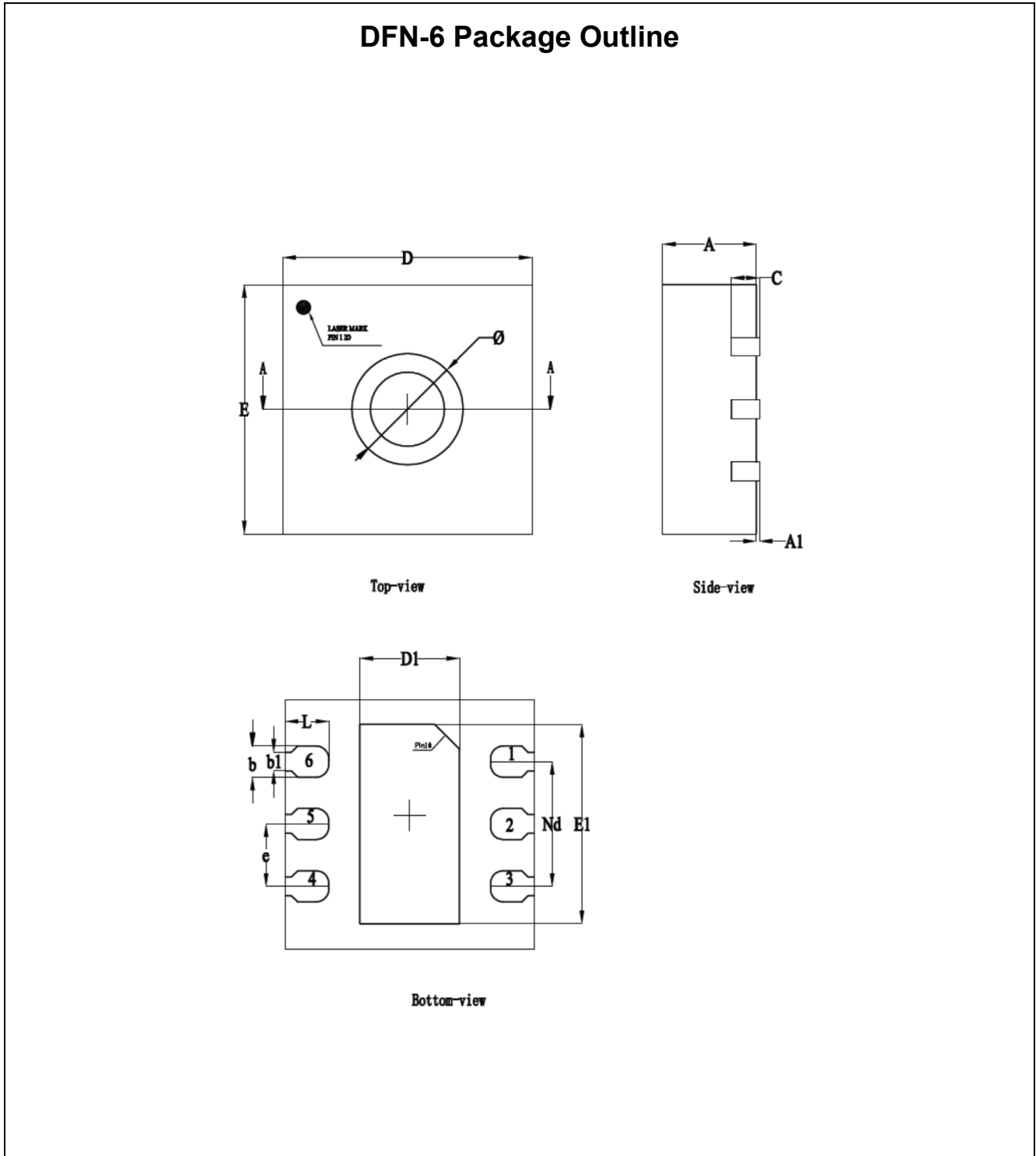
SCL is used to synchronize communication between the microprocessor and the sensor, and the microprocessor must ensure that the SCL clock frequency does not exceed 1MHz. The GD30TSHTC3 may pull down the SCL clock line in clock stretching mode.

SDA is used for data input and output of the sensor, and to ensure reliable communication, its timing must meet the requirements specified in the I2C protocol.

To avoid data conflicts, the microprocessor can only pull down the SDA and SCL bus lines, with the high level of the bus being achieved through pull-up resistors. The selection of pull-up resistors needs to be determined based on the load of the bus. It should be noted that some microprocessor IOs may include pull-up resistors. For mechanical stress considerations, the central pad must be soldered to the ground.

8 Package Information

8.1 Outline Dimension



NOTES:

1. All dimensions are in millimeters.
2. Package dimensions does not include mold flash, protrusions, or gate burrs.
3. Refer to the [Table 9. DFN-6 dimensions\(mm\)](#).

Table 9. DFN-6 dimensions(mm)

SYMBOL	MIN	NOM	MAX
A	0.70	0.75	0.80
A1		0.02	0.05
b	0.20	0.25	0.30
b1		0.15	
L	0.30	0.35	0.40
c	0.203REF		
D	1.90	2.00	2.10
E	1.90	2.00	2.10
D1	0.60	0.70	0.80
E1	1.50	1.60	1.70
Nd	1.0BSC		
e	0.50BSC		
θ	0.70	0.80	0.90
h		0.29	



9 Ordering Information

Ordering Code	Package Type	ECO Plan	Packing Type	MOQ	OP Temp(°C)
GD30TSHTC3SETR-I	DFN-6	Green	Tape & Reel	2000	-40°C to +130°C

10 Revision History

REVISION NUMBER	DESCRIPTION	DATE
1.0	Initial release and device details	2024

Important Notice

This document is the property of GigaDevice Semiconductor Inc. and its subsidiaries (the "Company"). This document, including any product of the Company described in this document (the "Product"), is owned by the Company according to the laws of the People's Republic of China and other applicable laws. The Company reserves all rights under such laws and no Intellectual Property Rights are transferred (either wholly or partially) or licensed by the Company (either expressly or impliedly) herein. The names and brands of third party referred thereto (if any) are the property of their respective owner and referred to for identification purposes only.

The Company makes no representations or warranties of any kind, express or implied, with regard to the merchantability and the fitness for a particular purpose of the Product, nor does the Company assume any liability arising out of the application or use of any Product described in this document. Any information provided in this document is provided only for reference purposes. It is the sole responsibility of the user of this document to determine whether the Product is suitable and fit for its applications and products planned, and properly design, program, and test the functionality and safety of its applications and products planned using the Product. Unless otherwise expressly specified in the datasheet of the Product, the Product is designed, developed, and/or manufactured for ordinary business, industrial, personal, and/or household applications only, and the Product is not designed or intended for use in (i) safety critical applications such as weapons systems, nuclear facilities, atomic energy controller, combustion controller, aeronautic or aerospace applications, traffic signal instruments, pollution control or hazardous substance management; (ii) life-support systems, other medical equipment or systems (including life support equipment and surgical implants); (iii) automotive applications or environments, including but not limited to applications for active and passive safety of automobiles (regardless of front market or aftermarket), for example, EPS, braking, ADAS (camera/fusion), EMS, TCU, BMS, BSG, TPMS, Airbag, Suspension, DMS, ICMS, Domain, ESC, DCDC, e-clutch, advanced-lighting, etc.. Automobile herein means a vehicle propelled by a self-contained motor, engine or the like, such as, without limitation, cars, trucks, motorcycles, electric cars, and other transportation devices; and/or (iv) other uses where the failure of the device or the Product can reasonably be expected to result in personal injury, death, or severe property or environmental damage (collectively "Unintended Uses"). Customers shall take any and all actions to ensure the Product meets the applicable laws and regulations. The Company is not liable for, in whole or in part, and customers shall hereby release the Company as well as its suppliers and/or distributors from, any claim, damage, or other liability arising from or related to all Unintended Uses of the Product. Customers shall indemnify and hold the Company, and its officers, employees, subsidiaries, affiliates as well as its suppliers and/or distributors harmless from and against all claims, costs, damages, and other liabilities, including claims for personal injury or death, arising from or related to any Unintended Uses of the Product.

Information in this document is provided solely in connection with the Product. The Company reserves the right to make changes, corrections, modifications or improvements to this document and the Product described herein at any time without notice. The Company shall have no responsibility whatsoever for conflicts or incompatibilities arising from future changes to them. Information in this document supersedes and replaces information previously supplied in any prior versions of this document.

© 2024 GigaDevice – All rights reserved